

Pepperell Community Electricity



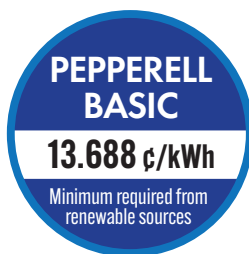
Pepperell Community Electricity is a new Town electricity supply program that gives residents and businesses more choice and control over how we power our community. The program is a group electricity purchasing program that changes the Electricity Supply price on your National Grid electric bill. Nearly 200 other cities and towns in Massachusetts have similar programs.

Using the bulk buying power of our community, Pepperell Community Electricity provides:

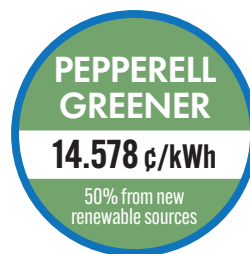
- Three new electricity supply choices.
- Fixed pricing until November 2026.
- Consumer protections, including the ability to leave the program at any time with no fee or penalty.

Pepperell Community Electricity has three options. Choose the one that's right for you.

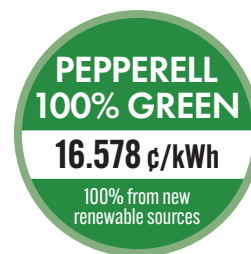
New program participants will be automatically enrolled in Pepperell Basic. Pepperell Greener and Pepperell 100% Green are available by request. Choose online or by phone.



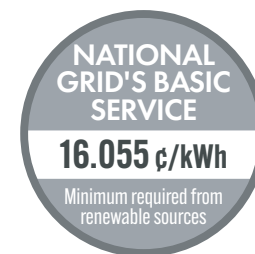
AUTO-ENROLL



OPTION



OPTION



OPT OUT

Two of the Pepperell Community Electricity prices are lower than National Grid's current residential Basic Service price and are fixed until November 2026.

Note that National Grid's future prices are unknown, so future savings cannot be guaranteed.

Most Pepperell electricity customers will be eligible for automatic enrollment.

• Have National Grid's Basic Service?

If you did not sign a private electricity supply contract, your account will be eligible for automatic enrollment, and you will receive a notification in the mail from the Town. State law requires the automatic enrollment model, but you are free to opt out before being automatically enrolled.

• Have a private electricity supply contract?

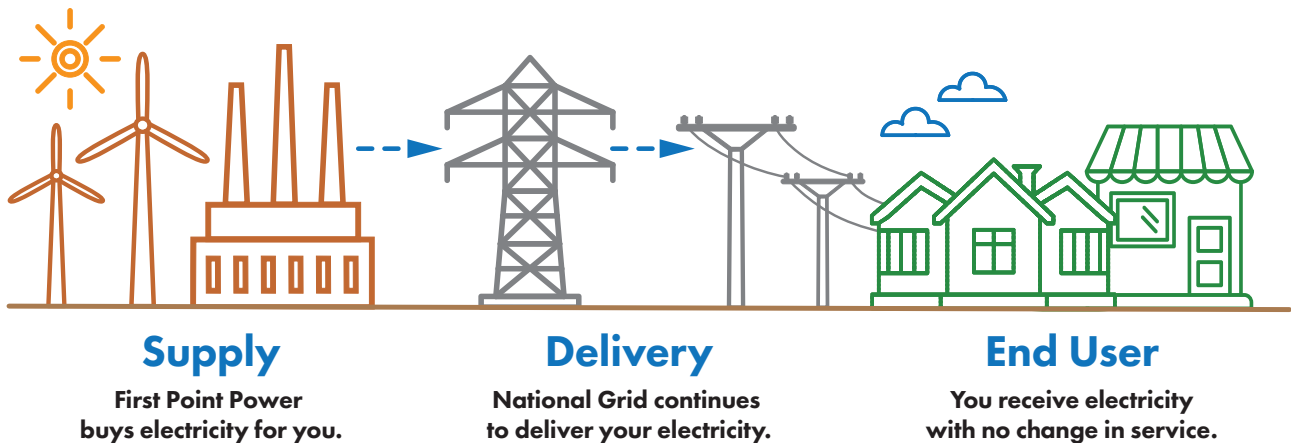
Your account will not be eligible for automatic enrollment, but you can request enrollment online at PepperellCommunityElectricity.com or by contacting customer support with the Town's program consultants at **1-844-202-6299**.

Participation is never required, and you are free to opt out at any time with no fee or penalty.

That means you can opt out before being enrolled and remain with National Grid's Basic Service price, or you can try the program and opt out later at any time.

How Pepperell Community Electricity Works

Pepperell Community Electricity changes your electricity supplier and the price that National Grid uses to calculate the Supply Services charge on your bill, which is the part of the bill where you pay for the electricity you use. But Pepperell Community Electricity does not replace National Grid as Pepperell's electric utility, and you will remain a National Grid customer.



Just two changes on your electric bill:

SERVICE FOR
JOHN SMITH
1010 ANY STREET
ANYTOWN, MA
99999

BILLING PERIOD
Oct 29, 2023 to Nov 26, 2023

ACCOUNT NUMBER
99999-99999

PAGE 2 of 2

PLEASE PAY BY
Dec 20, 20

Enrollment Information			
To enroll with a supplier or change to another supplier, you will need the following information about your account:			
Loadzone: WCMA			
Acct No: 99999-99999		Cycle: 1, SYLV	
Electric Usage History			
Month	kWh	Month	kWh
Dec 18	1029	Jul 19	0
Jan 19	1698	Aug 19	0
Feb 19	2086	Sep 19	0
Mar 19	1262	Oct 19	0
Apr 19	327	Nov 19	176
May 19	496	Dec 19	813
Jun 19	161		

Supply Services

SUPPLIER: **First Point Power - Pepperell Community Elec**
2000 Chapel View Blvd, Ste 450
Cranston, RI 02920

PHONE: **1-888-875-1711** ACCOUNT NO: 1234567

Electricity Supply: **0.13688** x 485 kWh

Total Supply Services

Other Charges/Adjustments

Paperless Billing Credit

Total Other Charges/Adjustments **-\$ 0.36**

1. Your electricity supplier will appear as First Point Power - Pepperell Community Elec.

2. Your Electricity Supply price will change to a Pepperell Community Electricity price.

Everything else remains the same!

National Grid continues to:

- Deliver your electricity with no interruption and address power outages.
- Send your electric bill and accept bill payments (this is the only electric bill you will receive as a participant).
- Provide fuel assistance, a low-income discount, and/or their Budget Plan if you are currently receiving these benefits.

The ONLY electricity supply program approved by and for the Town of Pepperell. If you don't see the Town Seal, it's not from the Town.

PepperellCommunityElectricity.com • 1-844-202-6299

